



# NestMaster™ 2010

NESTING & PROCESS OPTIMIZATION SOFTWARE

## Power made simple

NestMaster nesting software, for introductory conventional plasma and oxyfuel applications, delivers best-in-class performance and reliability, yet is also incredibly easy to learn and use. NestMaster's intuitive design allows even the most inexperienced operator to comfortably work with the program, which typically can be fully learned within one hour—a fraction of the time it takes to learn alternative systems. NestMaster is **Power Made Simple!**

## Performance you can depend on

With NestMaster you can import 2D CAD files, nest parts, output NC code, and generate reports using a single program. NestMaster automatically creates the tool path (lead in/out style and placement, cut direction, sequencing, etc.) for CAD files as well as for parts developed in the shapes library. By optimizing programming and production operations, NestMaster can increase your profits.

NestMaster provides you with efficient automatic nesting and flexible manual nesting to help increase material utilization. Automatic nesting technology features a true shape nesting strategy that looks at the exterior profile of the parts when nesting and allows for part-in-part nesting and multiple sheets per job. A variety of interactive nesting features (rotate, bump, array, etc.) enable you to manually nest parts with ease. User-defined separation values for part-to-part, part-to-plate edge, and part-to-pierce are used during automatic and manual nesting to further assist with material savings.

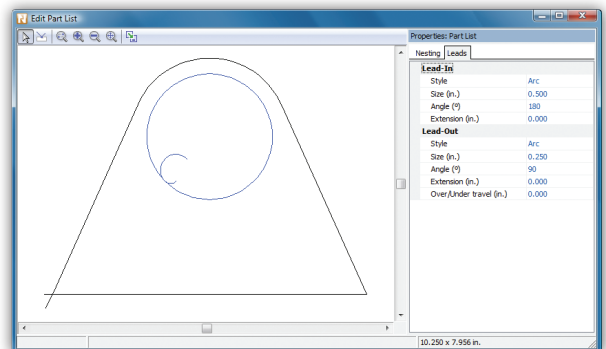
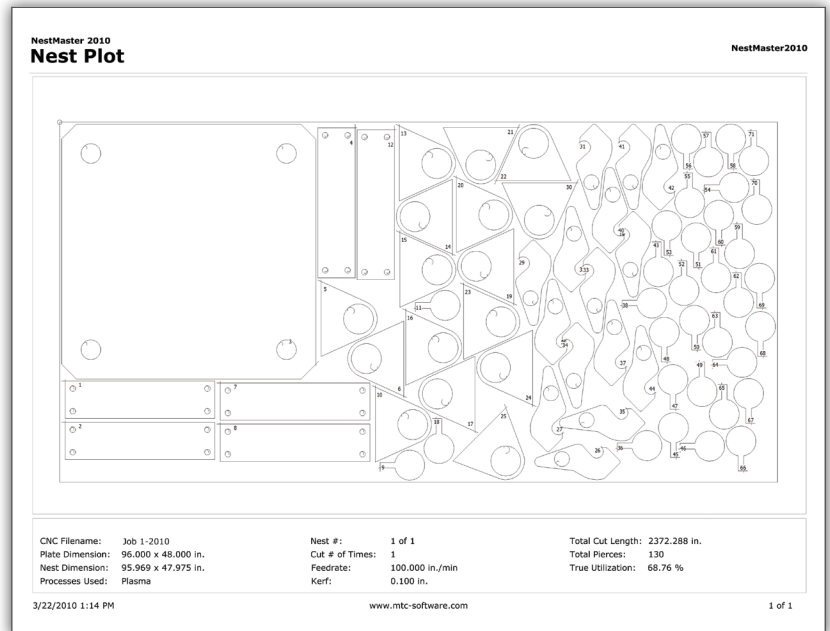
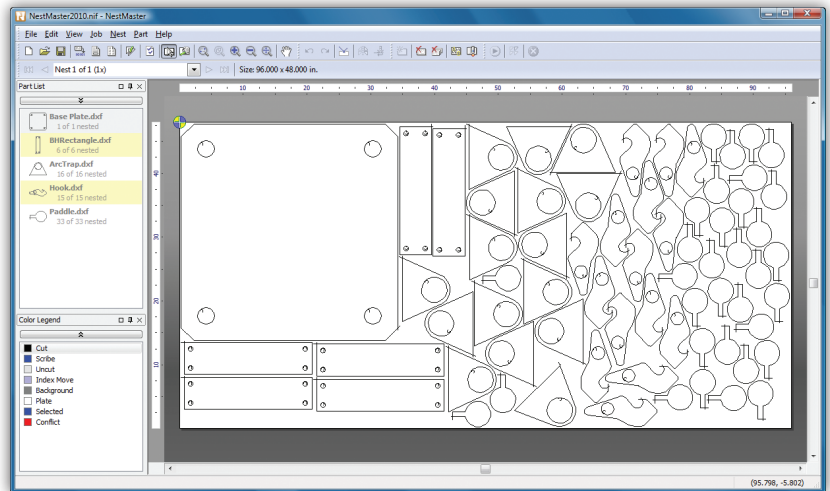
Upon completion of nesting, NC code is automatically created for your cutting machine. Information about the job (nest image, plate dimension, material utilization, cut sequence, etc.) is provided in NestMaster's printed reports. These reports allow management and machine operators to quickly and easily access the job information that they need.

## Our commitment

MTC Software products are accompanied by the industry's best technical support provided via company and channel partner specialists who are available to assist you using telephone, fax, email, and online support sessions.

Ongoing enhancements are made to MTC Software products resulting in periodic version and update releases, ensuring users always have access to the most advanced solutions.

The available Software Subscription program provides software users with full access to technical support and all product updates.





# NestMaster™ 2010

## NESTING & PROCESS OPTIMIZATION SOFTWARE

### Standard features

#### CAD/CAM import, conversion, and part development

- Import and automatic conversion of \*.dxf and \*.dwg files
- Import and automatic assignment of CAD layer(s) name and color information for cutting and scribing processes
- Automatic entity reduction and smoothing produced from jagged line, polyline, and spline entities
- Variable shape parts library to create commonly-used geometric parts within NestMaster
- Open profiles and overlaps in CAD files are automatically corrected
- Leads, cut direction, and sequencing are automatically assigned on import plus tool paths are generated on-the-fly

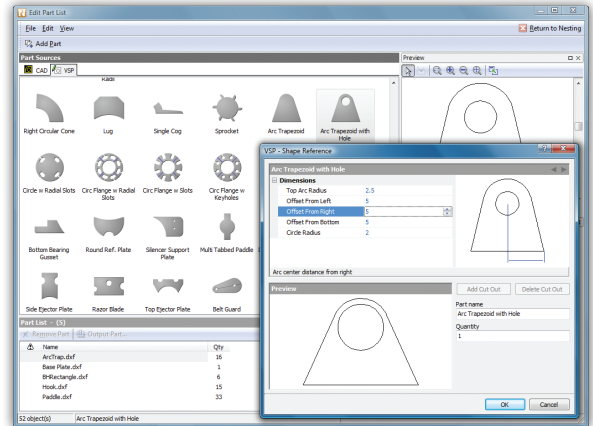
#### Nesting

- Automatic and interactive manual nesting on a customizable sheet size
- Edit lead in/out position before and/or after parts are nested
- Independent part, plate, and pierce separation control
- Advanced drag-and-drop, copy, bump, mirror, rotate, and array functionality
- Part interference detection
- Automatic nest sequencing
- Animated cutting sequence simulation

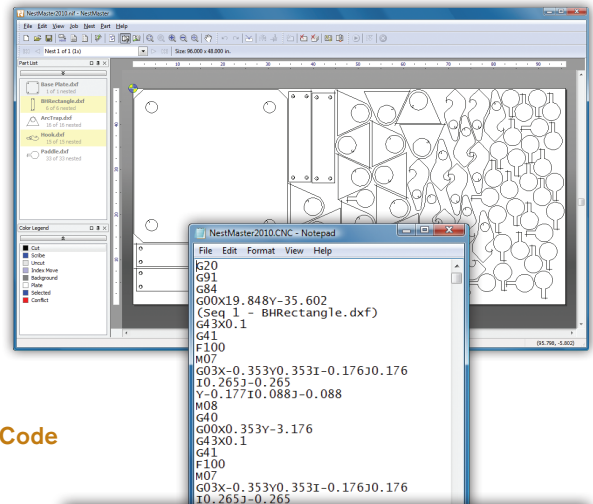
#### Output and reporting

- One click NC code generation with machine-specific post processor
- Feedrate and kerf output with ability to pre-kerf
- Shop report with picture of nest, cut sequence, sheet and nest dimensions, utilization percentage, etc.

### STEP 1 – Create / Add Parts

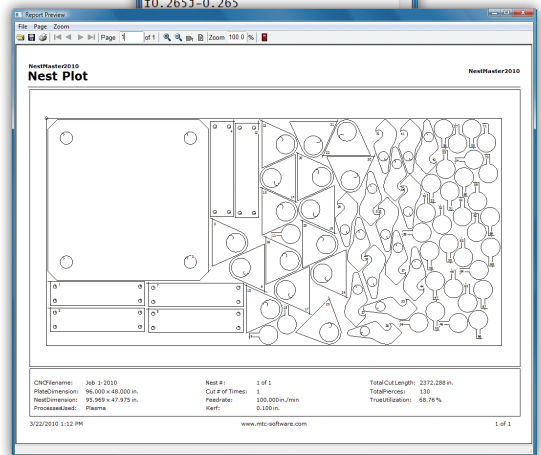


### STEP 2 – Nest Parts



### STEP 3 – Create NC Code

### STEP 4 – Print Report



#### Americas

**United States – Central Operations** mtc@mtc-software.com | +1 (716) 434-3755

**Canada** mtcCA@mtc-software.com | **Mexico** mtcMX@mtc-software.com

**Brazil** mtcBR@mtc-software.com

#### Asia Pacific

**Singapore** mtcSG@mtc-software.com | **China** mtcCN@mtc-software.com

**Japan** mtcJP@mtc-software.com | **Australia** mtcAU@mtc-software.com

#### Europe, Middle East, and Africa

**United Kingdom** mtcUK@mtc-software.com | **Netherlands** mtcNL@mtc-software.com

MTC Software, Power Made Simple, and Hypertherm are trademarks of Hypertherm, Inc. and may be registered in the United States and/or other countries. All other trademarks are the property of their respective owners. All rights reserved.